

Topical Issues of the Riga Riga metropolitan area

Guntars Ruskuls

Head of Strategic Planning Division,
City Development Department



RĪGAS DOME

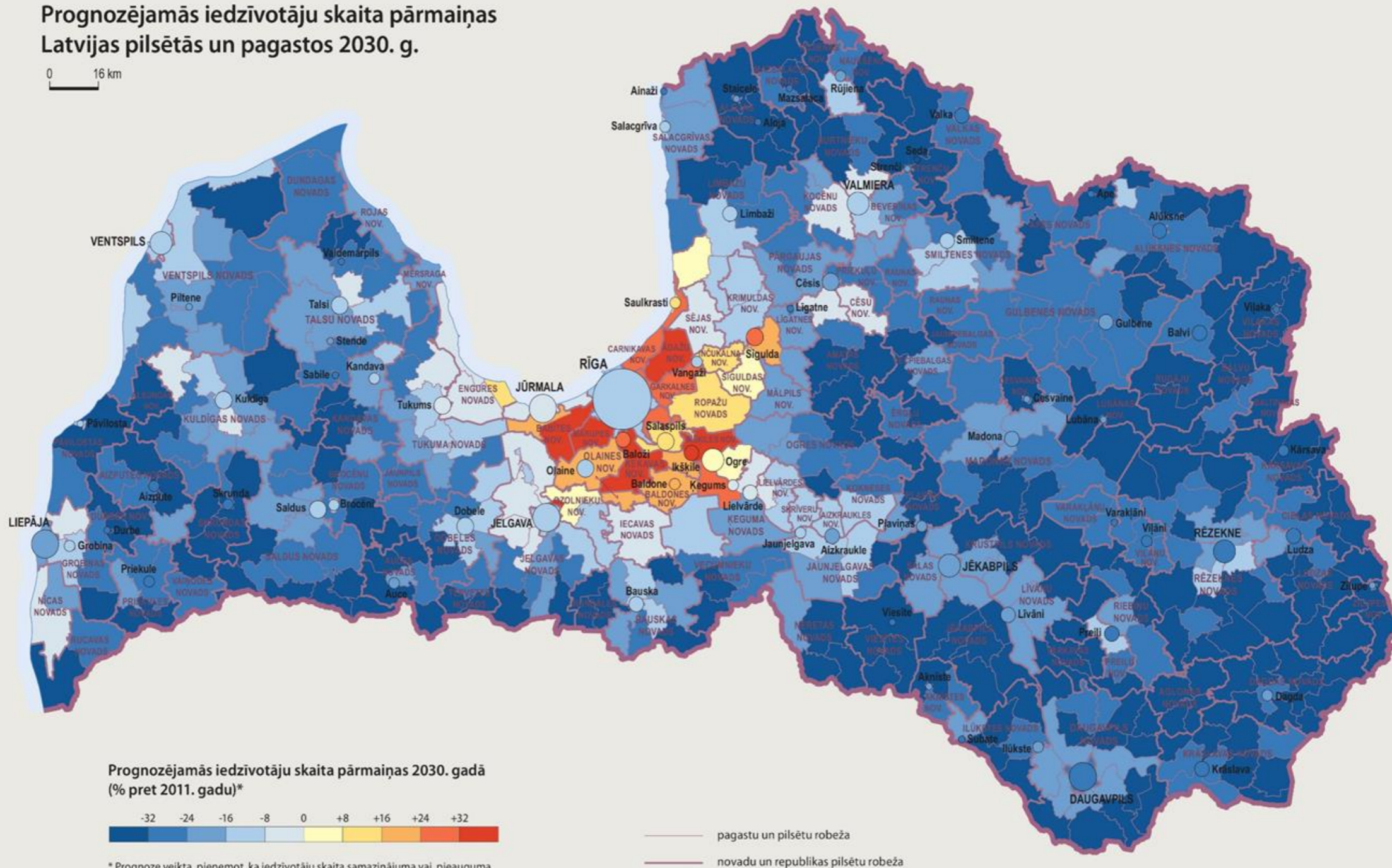
The role of metropolitan governments in the framework of the EU Urban policies
Workshop, Brussels, 11 October 2017



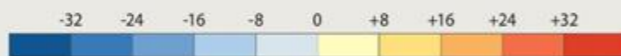
Population forecast in Latvia - 2030

Prognozējamās iedzīvotāju skaita pārmaiņas Latvijas pilsētās un pagastos 2030. g.

0 16 km



Prognozējamās iedzīvotāju skaita pārmaiņas 2030. gadā (% pret 2011. gadu)*

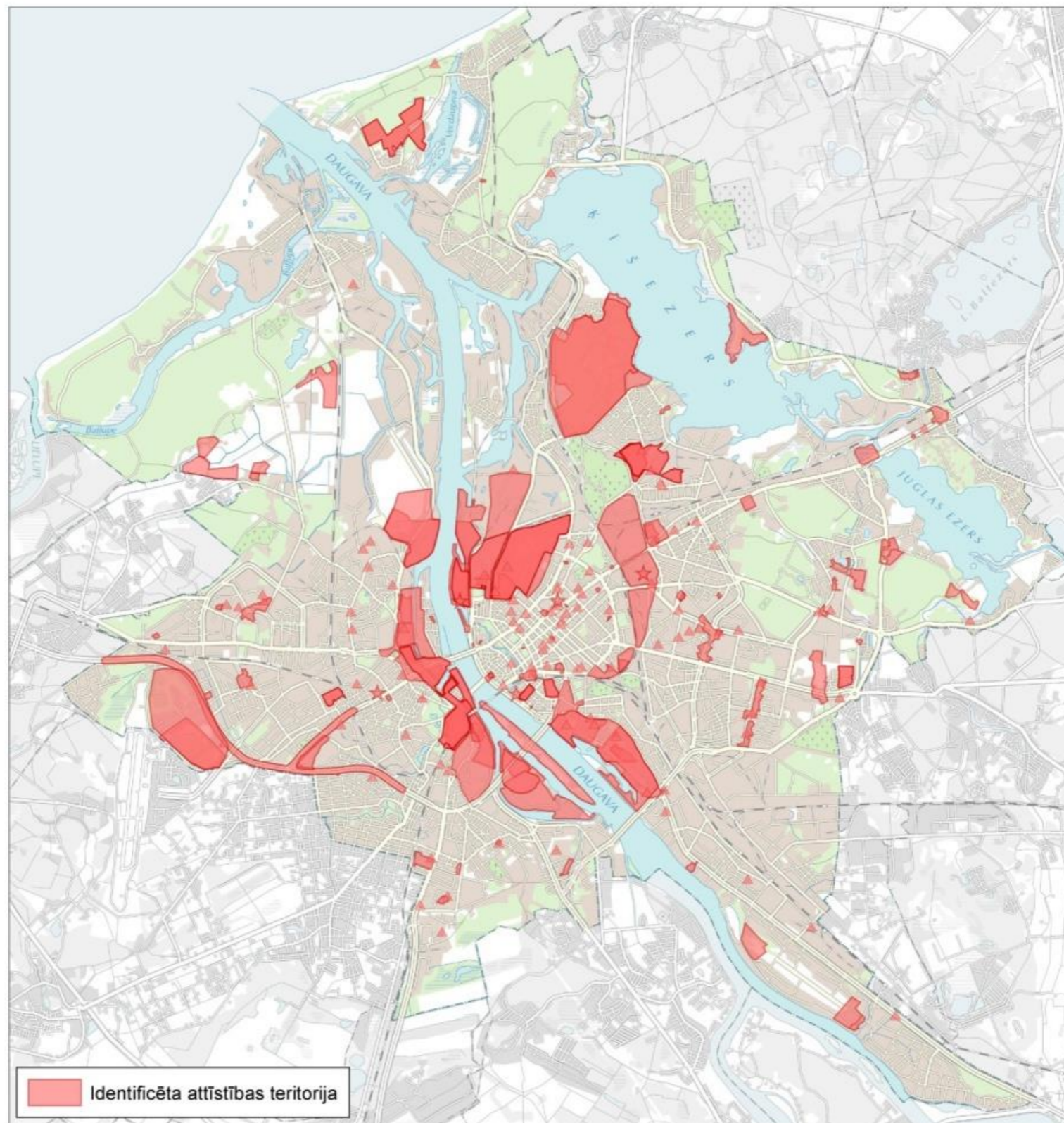


* Prognoze veikta, pieņemot, ka iedzīvotāju skaita samazinājuma vai pieauguma vidējais temps konkrētajā pilsētā un pagastā būtiski neatšķirsies no šī rādītāja laika posmā starp 2000. un 2011. gada tautas skaitīšanām. Minētais periods aptver gan ekonomiskā uzplaukuma, gan lejupslīdes laiku, ietekmējot kā migrācijas, tā dzimstības svārstības valstī.



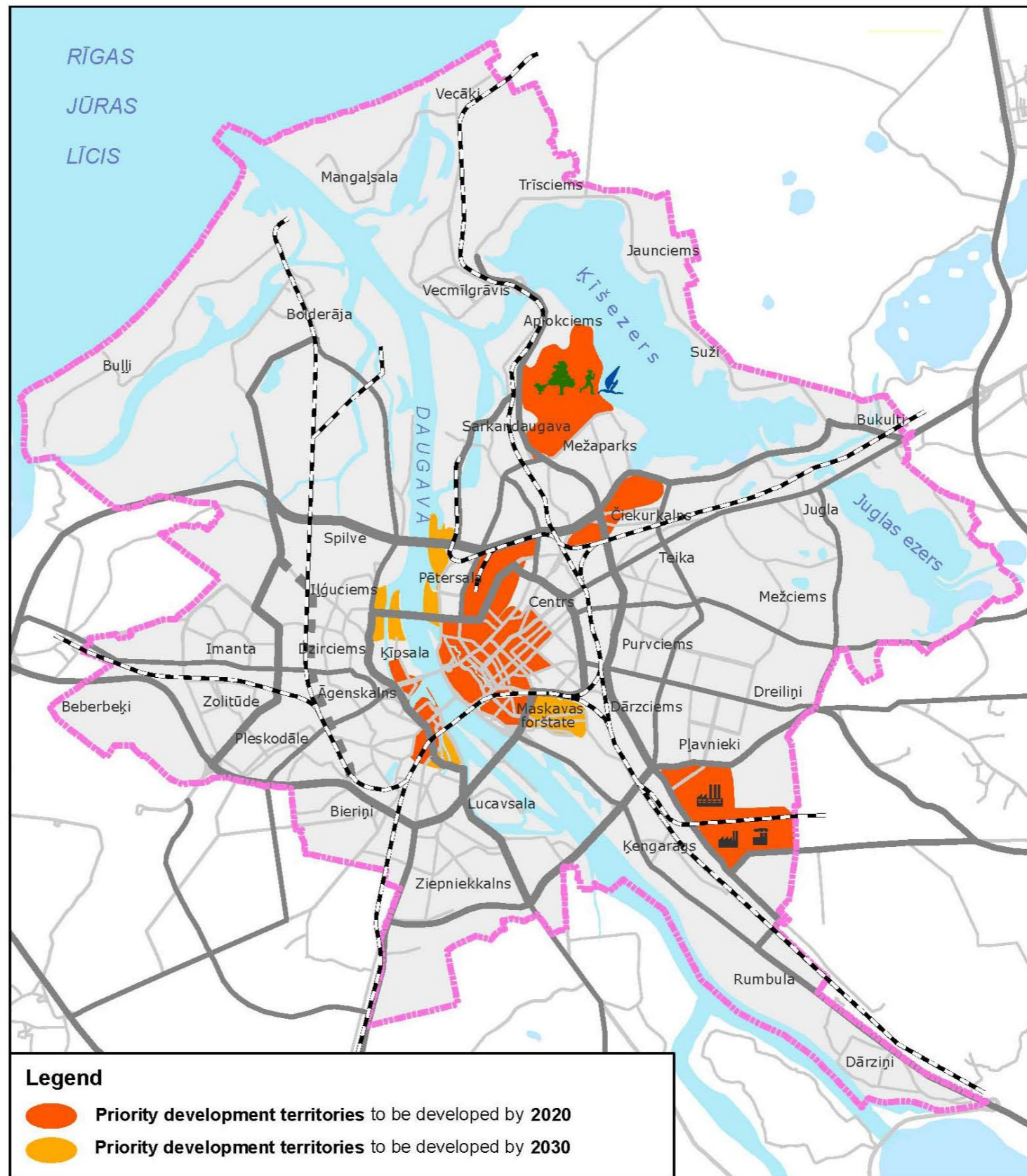


Previous situation- polycentric development in the City



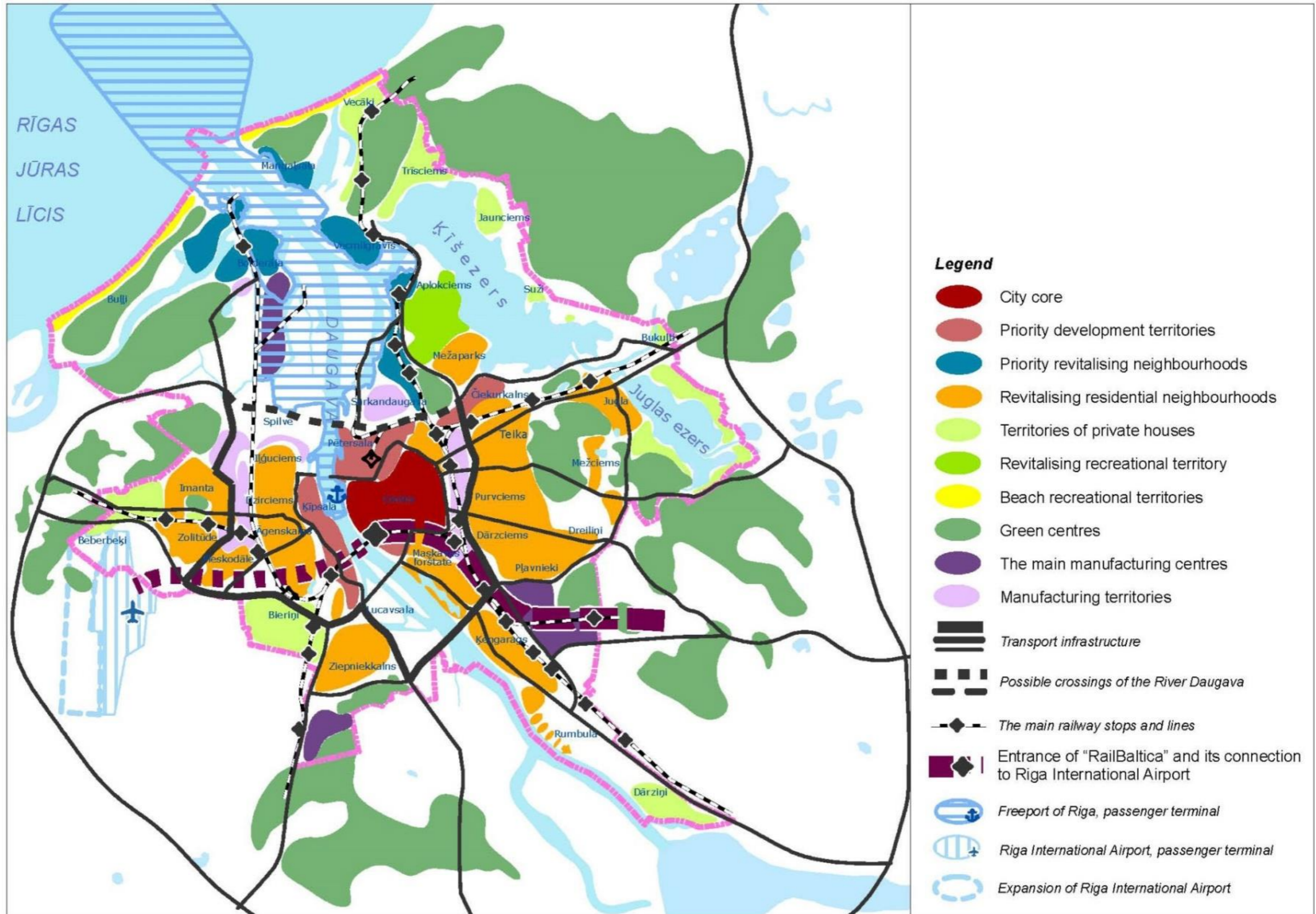


Strategy 2030 - Compact city model





Riga 2030 structural plan





Major infrastructure projects planned for 2014-2020 according to City Strategy 2030 and supported by EU Funds

- Energy efficiency and renovation activities
- Complete of Eastern motorway
- Tornakalna multimodal transport hub
- ITI projects in priority development territories (Skanste, Central market area)
- New tram line to Skanstes neighbourhood (76 mil EUR from Cohesion fund).
- Rail Baltic

Missing – P&R

EU co-financed projects in Riga

Implemented projects 2010-2017

Total amount (MEUR)		Intensity
Riga Co-FIN	156.2	47%
EU Co-FIN	149.5	45%
State Co-FIN	4.8	1%
Other (funds) Co-FIN	21.5	6%

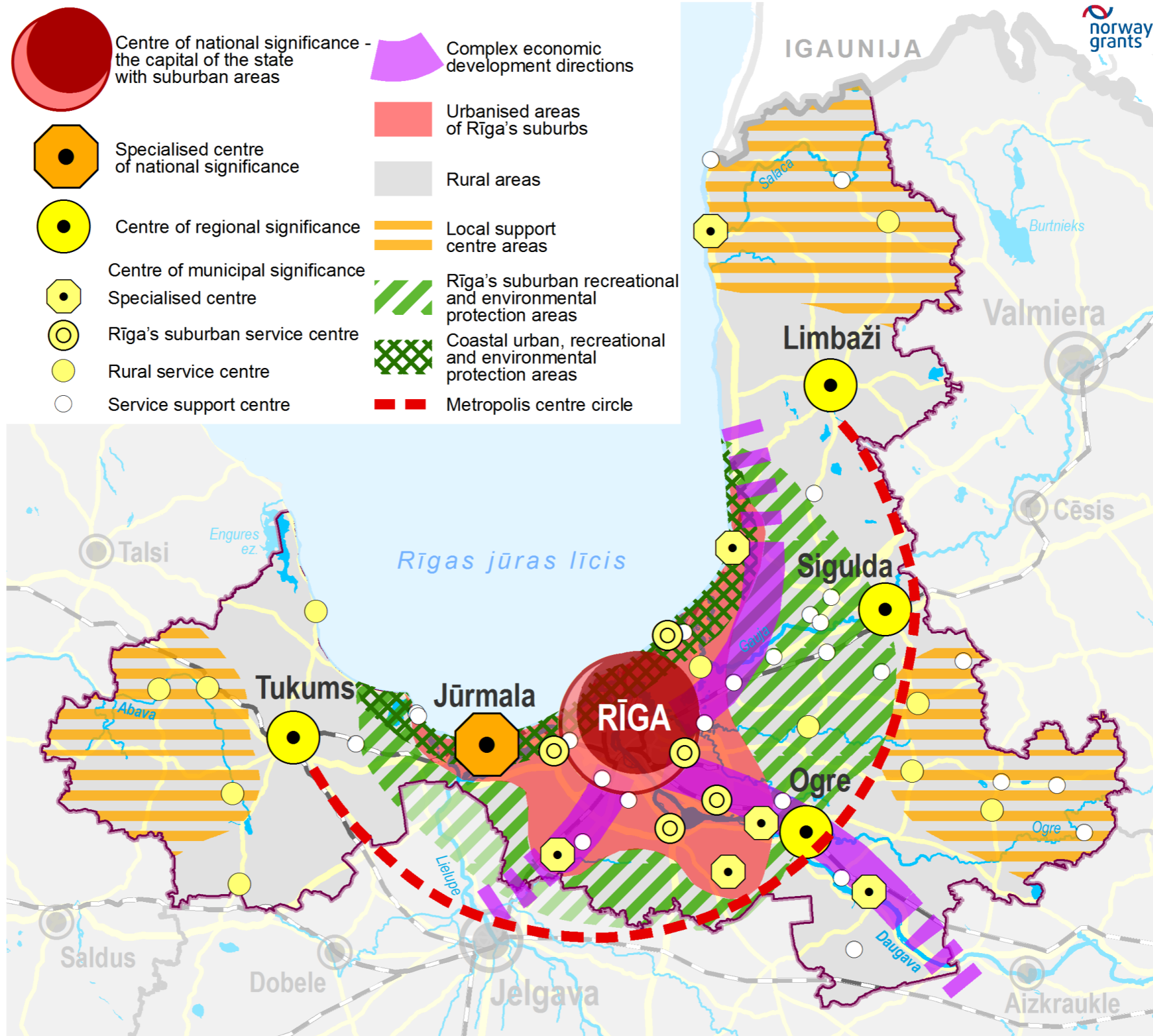
Ongoing and planned projects up to 2020

Total amount (MEUR)		Intensity
Riga Co-FIN	118.79	32%
EU Co-FIN	228.01	61%
State Co-FIN	27.4	7%
Other (funds) Co-FIN	0.00	0%





Cooperation with Metropolitan area



The map is developed within the framework of the project "Increasing territorial development planning capacities of planning regions and local governments of Latvia and elaboration of development planning documents" (No. 4.3.-24/NFI/INP-002) of the 2009-2014 program No. LV07 "Capacity-building and institutional cooperation between Latvian and Norwegian public institutions, local and regional authorities" of the Norwegian Financial Mechanism



Specific metropolitan issues to support for the next the EU Funds programming period

- Test new tools and multi-level governance approaches at metropolitan area scale.
- Include in operational programmes specific actions in support of metropolitan areas
- Allocating more financial instruments directly for Capital Cities and their metropolitan areas
- Support integrated planning, joint projects, joint investments and integrated strategies at metropolitan level
- Integrated Territorial Investment (ITI)

Thank you!



RĪGAS DOME