

Topical Issues of the Riga City Development

Guntars Ruskuls

**Acting Head of the Strategic Management Board
City Development Department**



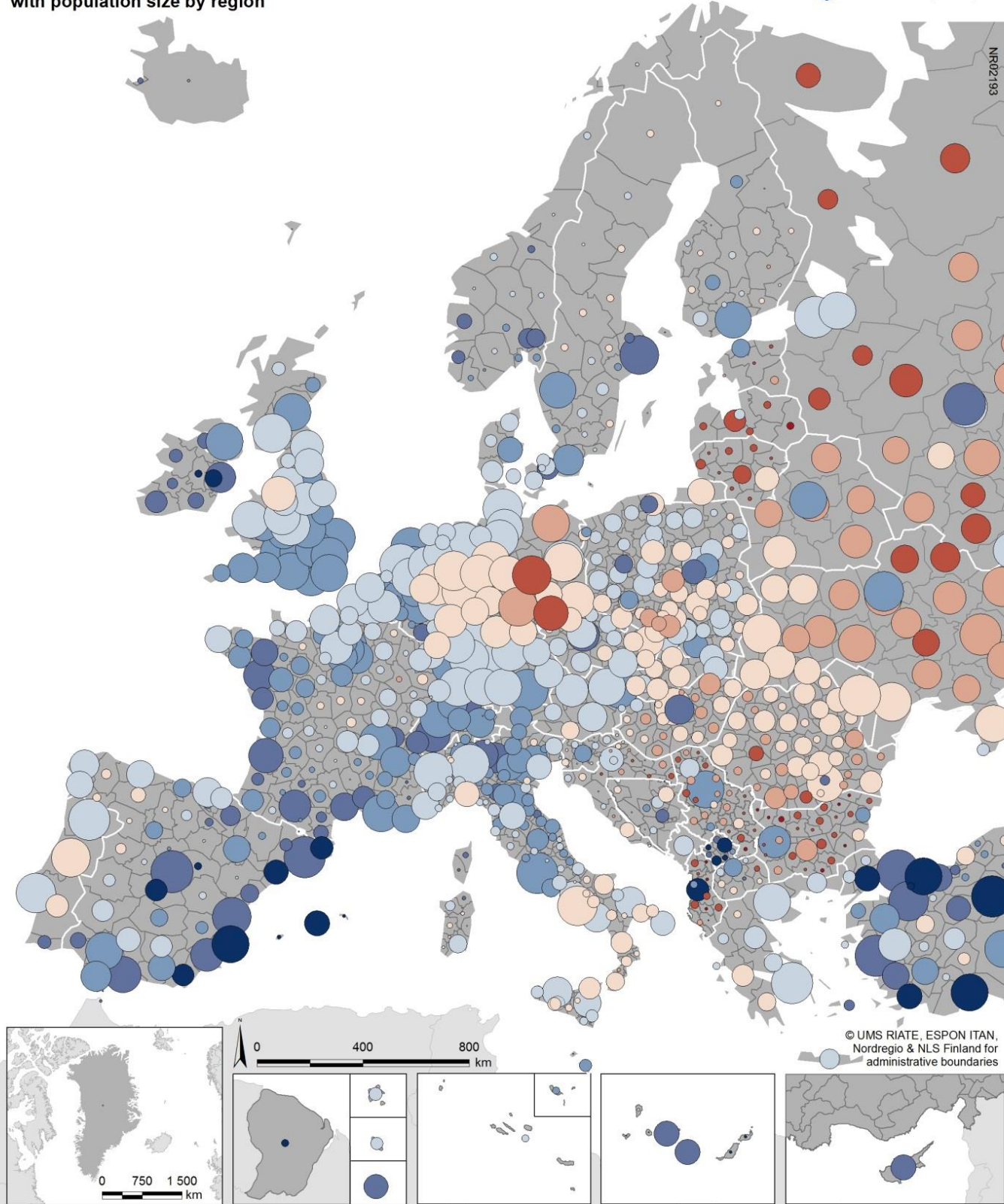
RĪGAS DOME

I-Water Final Conference in Riga, 08.05.2018.

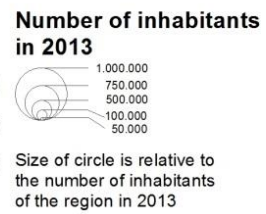
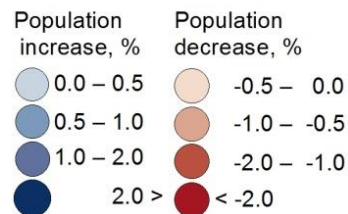


RĪGAS DOME

Total population change in European regions 2000-2013 with population size by region



Annual average population change in Europe 2000-2013, in %
at regional level*



*) Regional level: NUTS 2/3 (mix) & SNUTS 2. NUTS 2: AT, BE, CH, DE, EL, NL, PT & UK. SNUTS 2: BY, FO, GL, MD, RU, UA

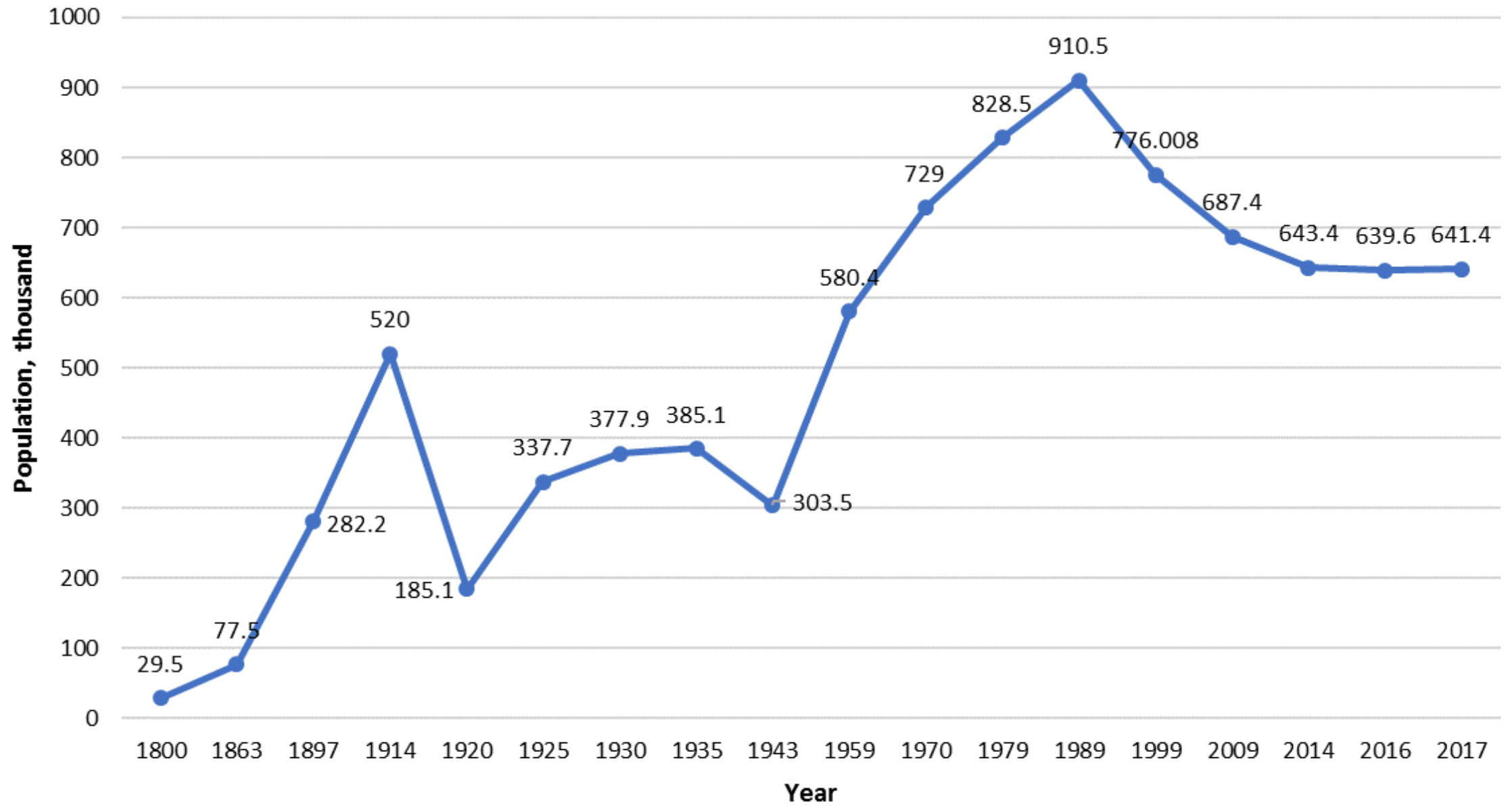
2000-2013 data, except: IS, Mecklenburg-Vorpommern (DE), MK, RO & UK 2000-2012. AL 2001-2012. BA 2000-2010. HR 2002-2013. MD 2005-2013. RS 2002-2011. TR 2008-2013. XK 2011-2013. Estimates: AL, XK

No data: Brčko District (BA), Republika Srpska (BA) & Transnistria (MD)

Source: Eurostat, NSIs, Nordregio



Population fluctuations in Riga



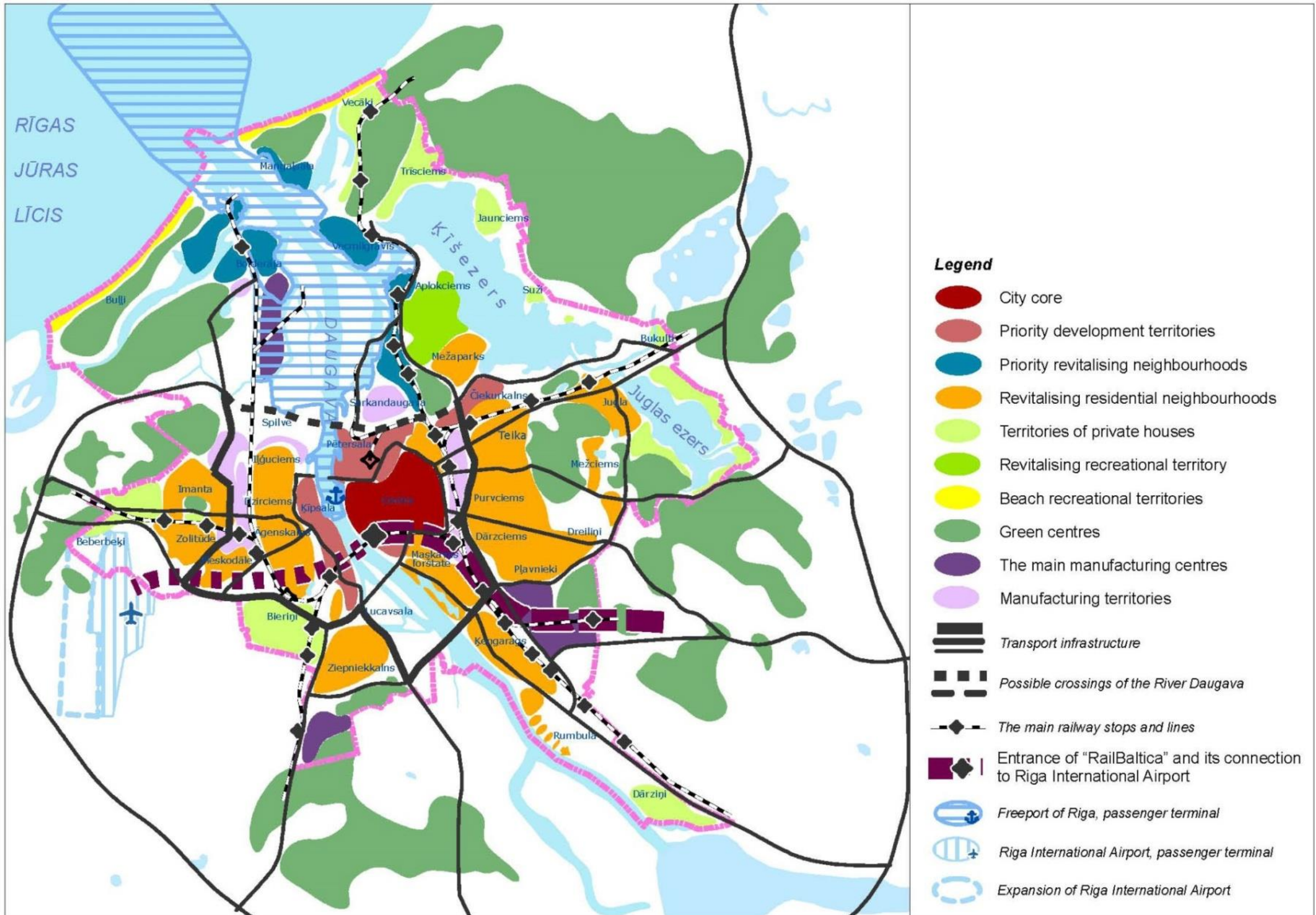


Participatory planning





Riga 2030 structural plan

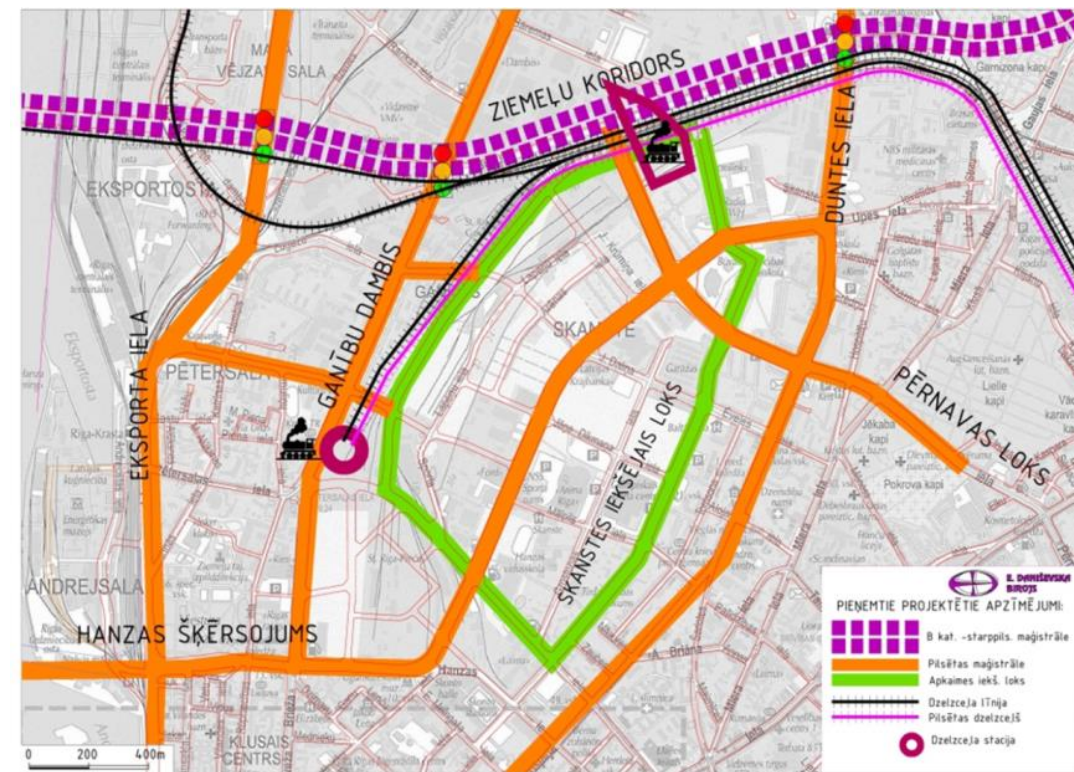




RĪGAS DOME

Skanste district Local Plan - Strategic Extension of the City Centre

Population forecast – 36 059
Employment forecast – 33 023



2050



2022

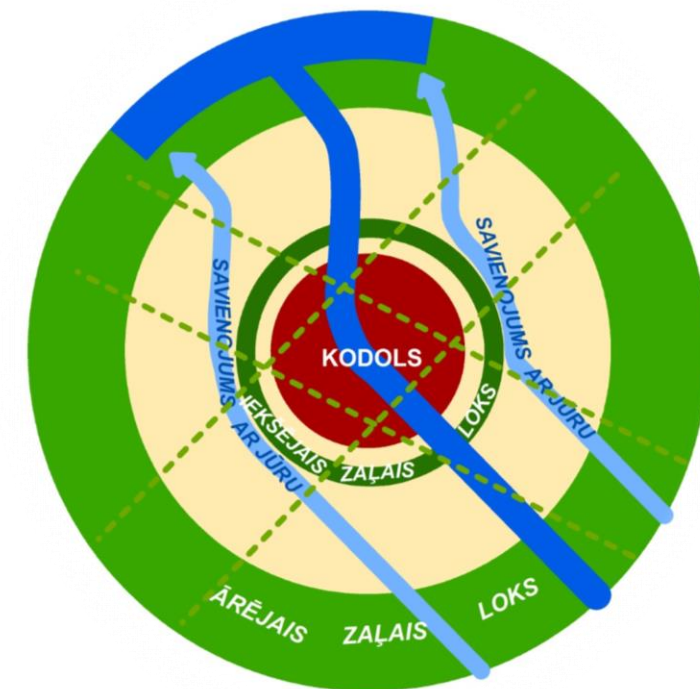
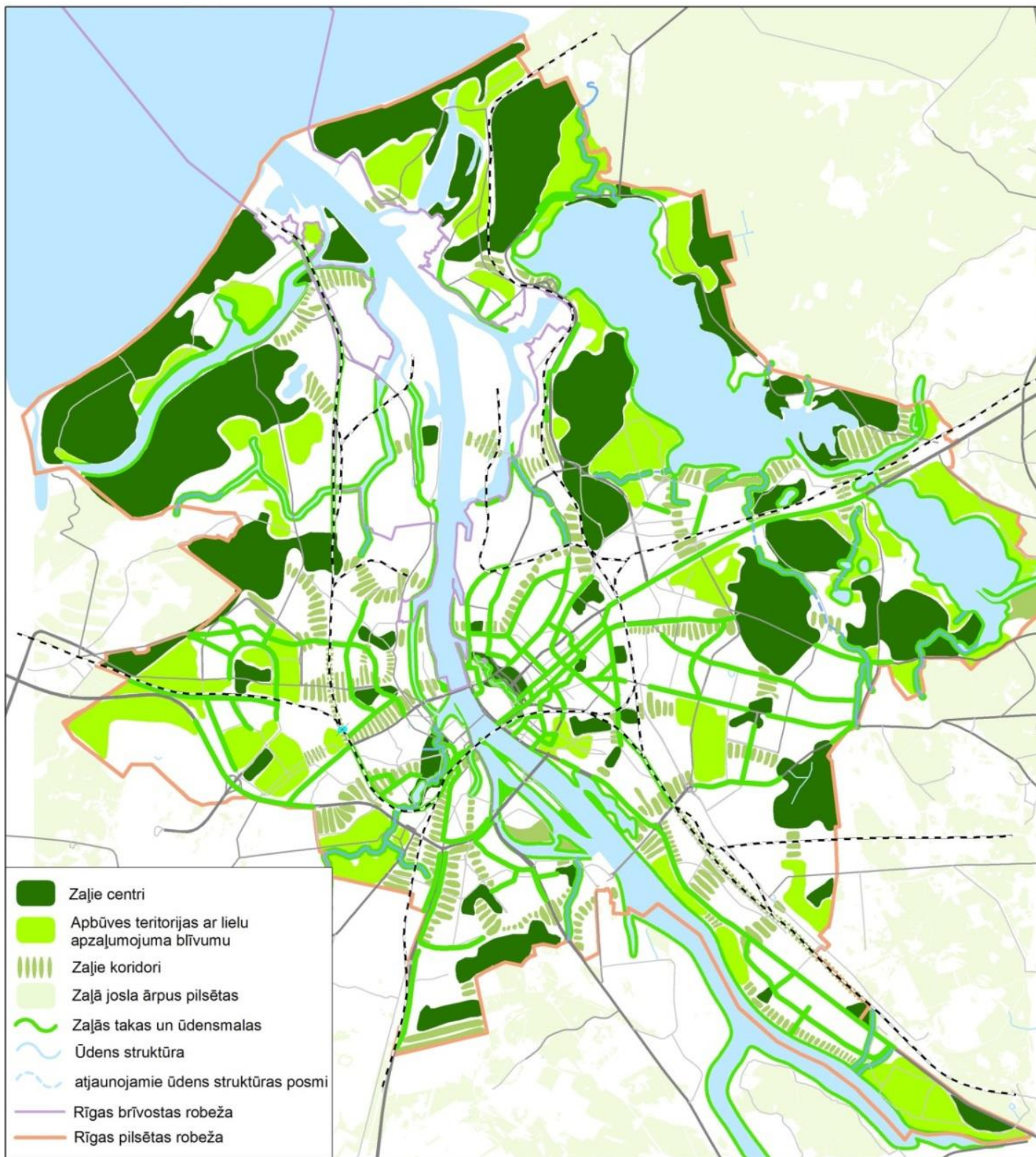


2030





Green corridors





RĪGAS DOME

Green infrastructure in Skanste district





LONG-TERM DEVELOPMENT OBJECTIVES OF RIGA



Thank you!



RĪGAS DOME