

iWater project

Pilot site
TORNAKALNS

Andris Ločmanis

Rīga, 7 May 2018



Integrated Storm Water Management
www.integratedstormwater.eu



EUROPEAN UNION
European Regional Development Fund





ISWM pilotsite RIGA

**Exciting
journey**



Integrated Storm Water Management
www.integratedstormwater.eu



EUROPEAN UNION
European Regional Development Fund



Tornakalns





What?



Development of a **concept** for local innovative & multifunctional **stormwater solution**, based on Green Infrastructure:

- Based on a multivalued stormwater solution developed by students within the iWater Summer Schools, in pilot sites provided by each partner city



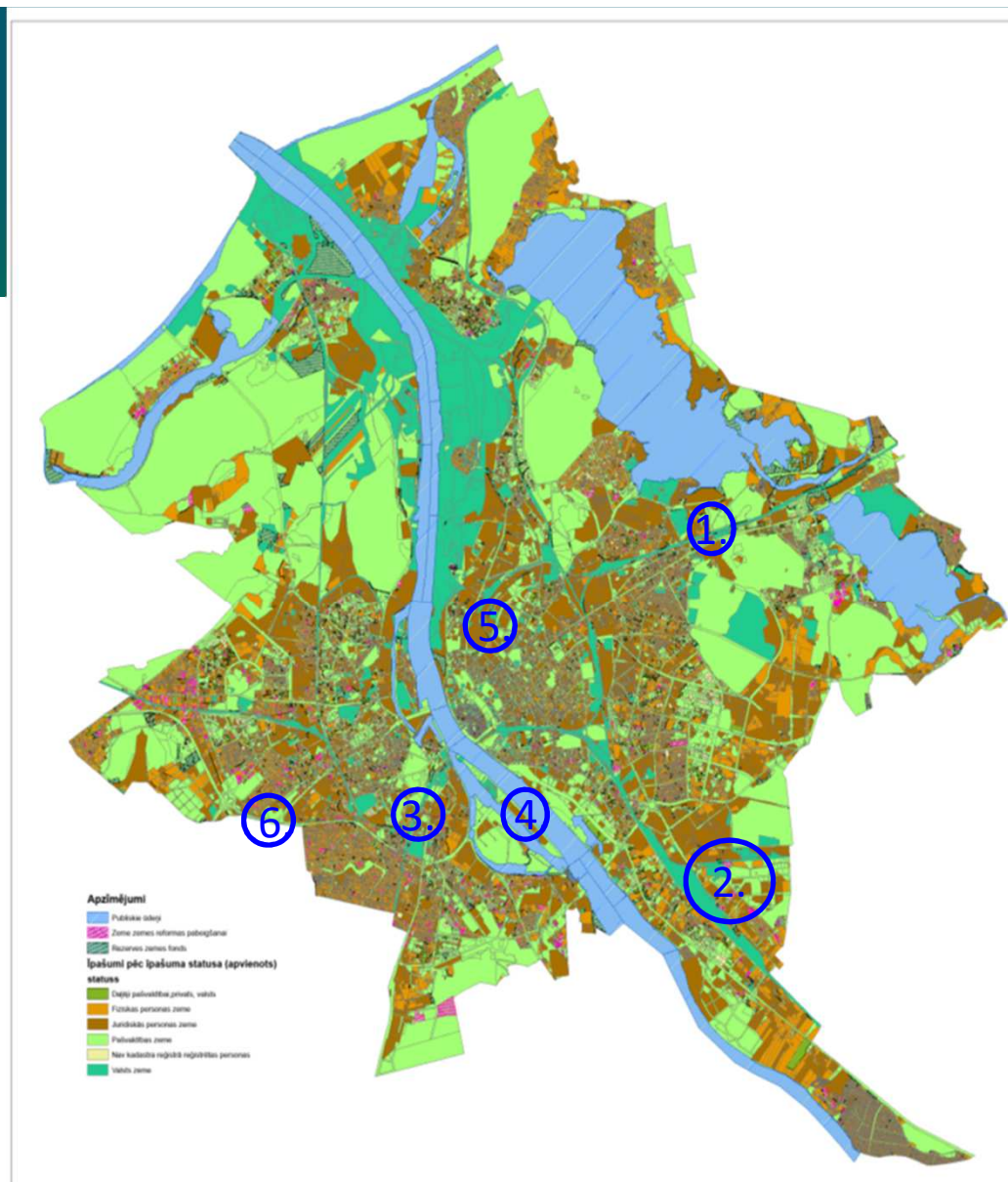


Kick-off!

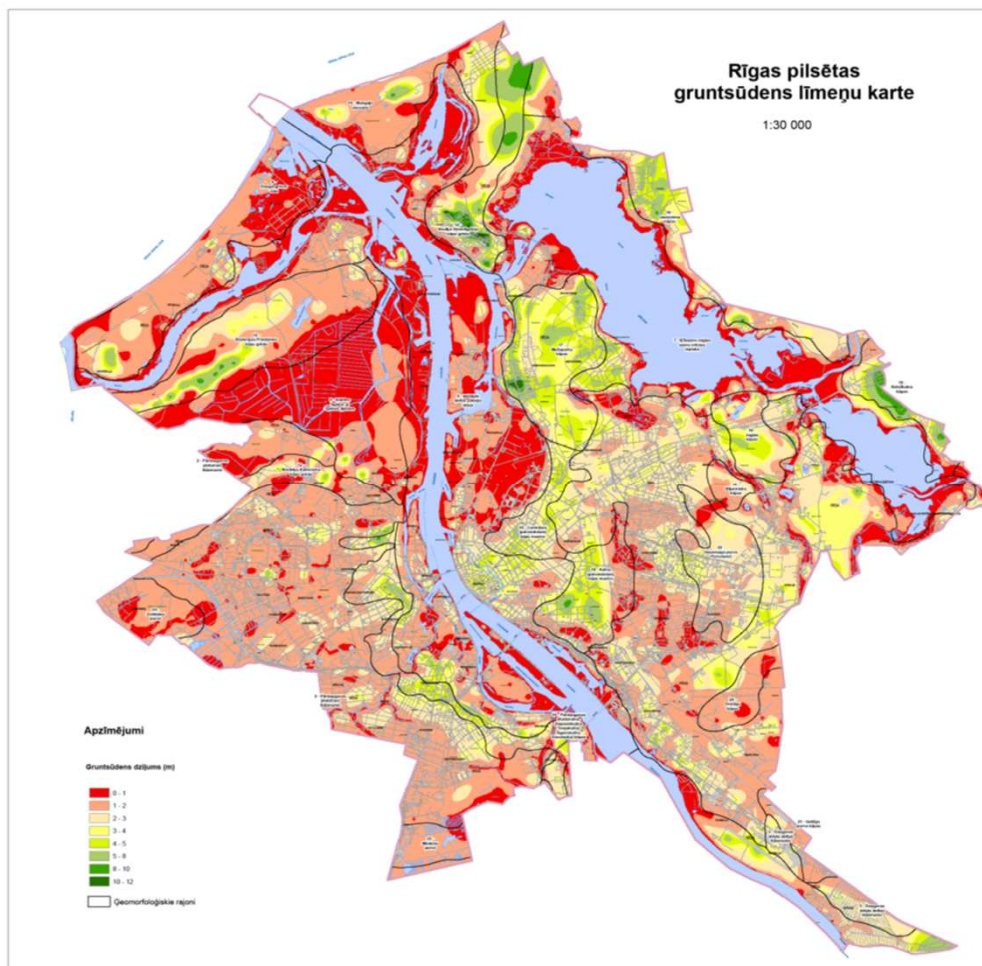


Areas for iWater pilotsite Riga

1. Connections between lakes Babelitis and Kisezers
2. Granīta street area
3. Torņakalns
4. Krasta street area
5. Skanste
6. Lielirbes street area



Chosen site: Tornakalns



Tornakalns

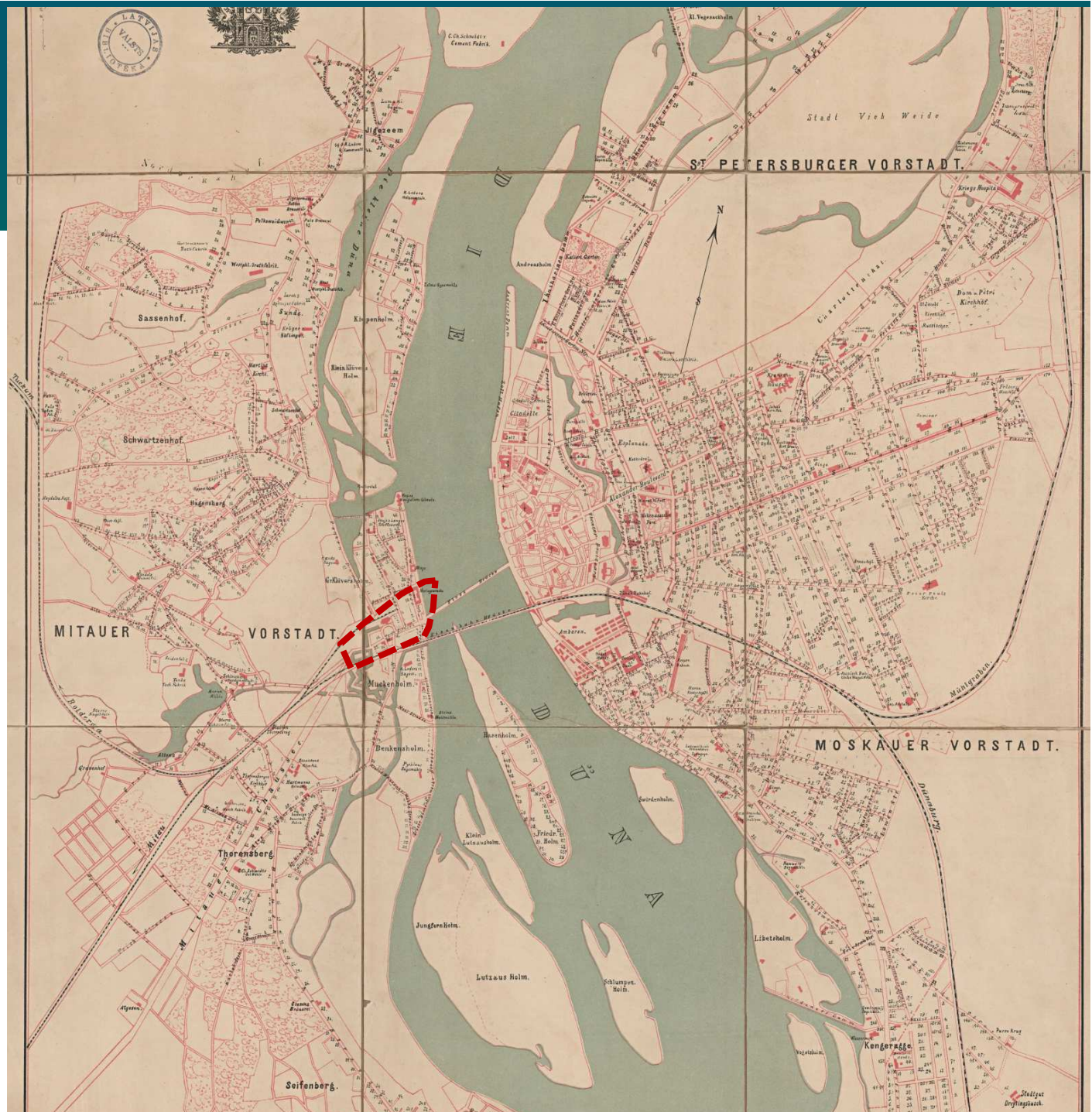
1. City owned relatively low area without built-in rainwater drainage system
2. Near Kileveins channel.
3. Area for development.

Site history



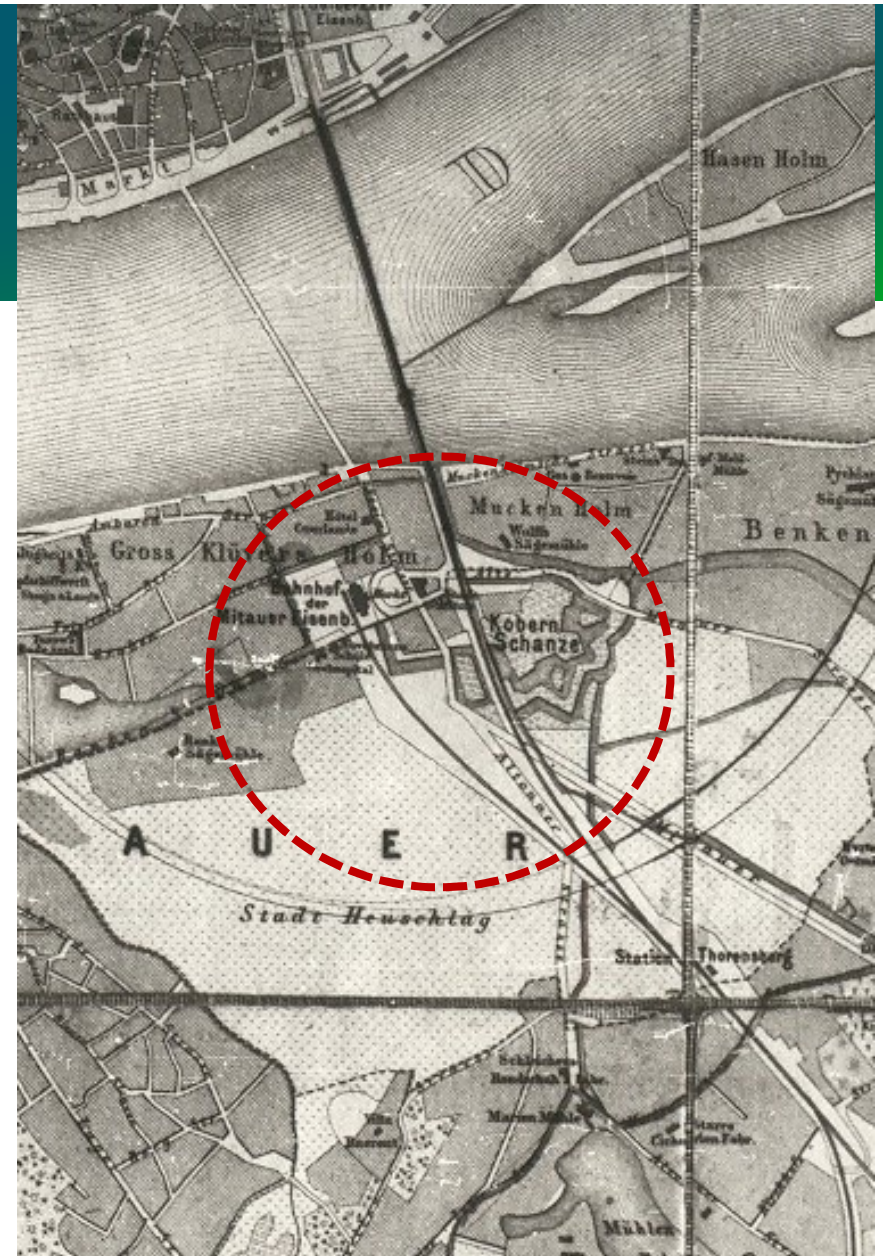
WATER BIOGRAPHY:

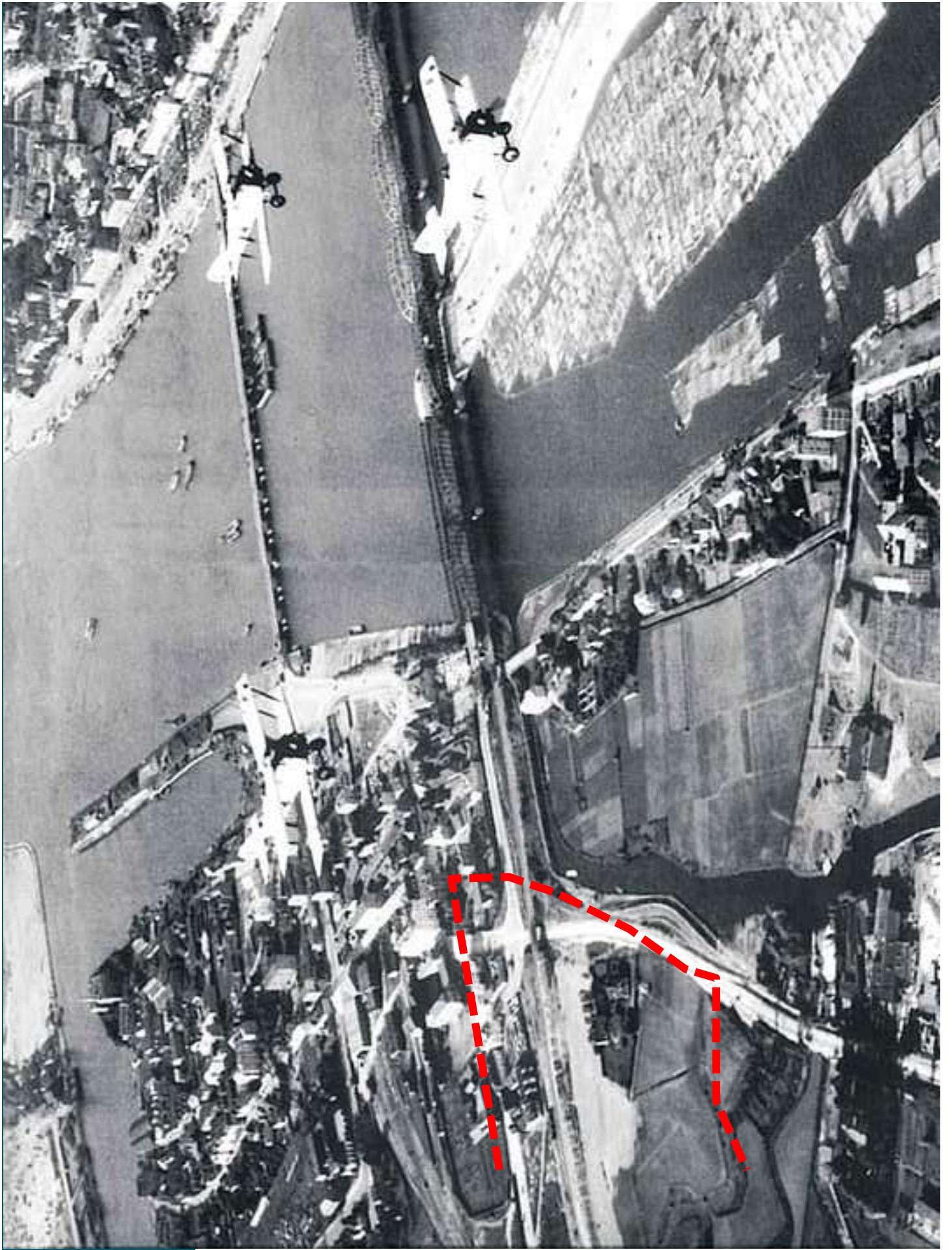
FROM 'ARCHIPELAGO'
TO CURRENT
SITUATION



LAND BIOGRAPHY:

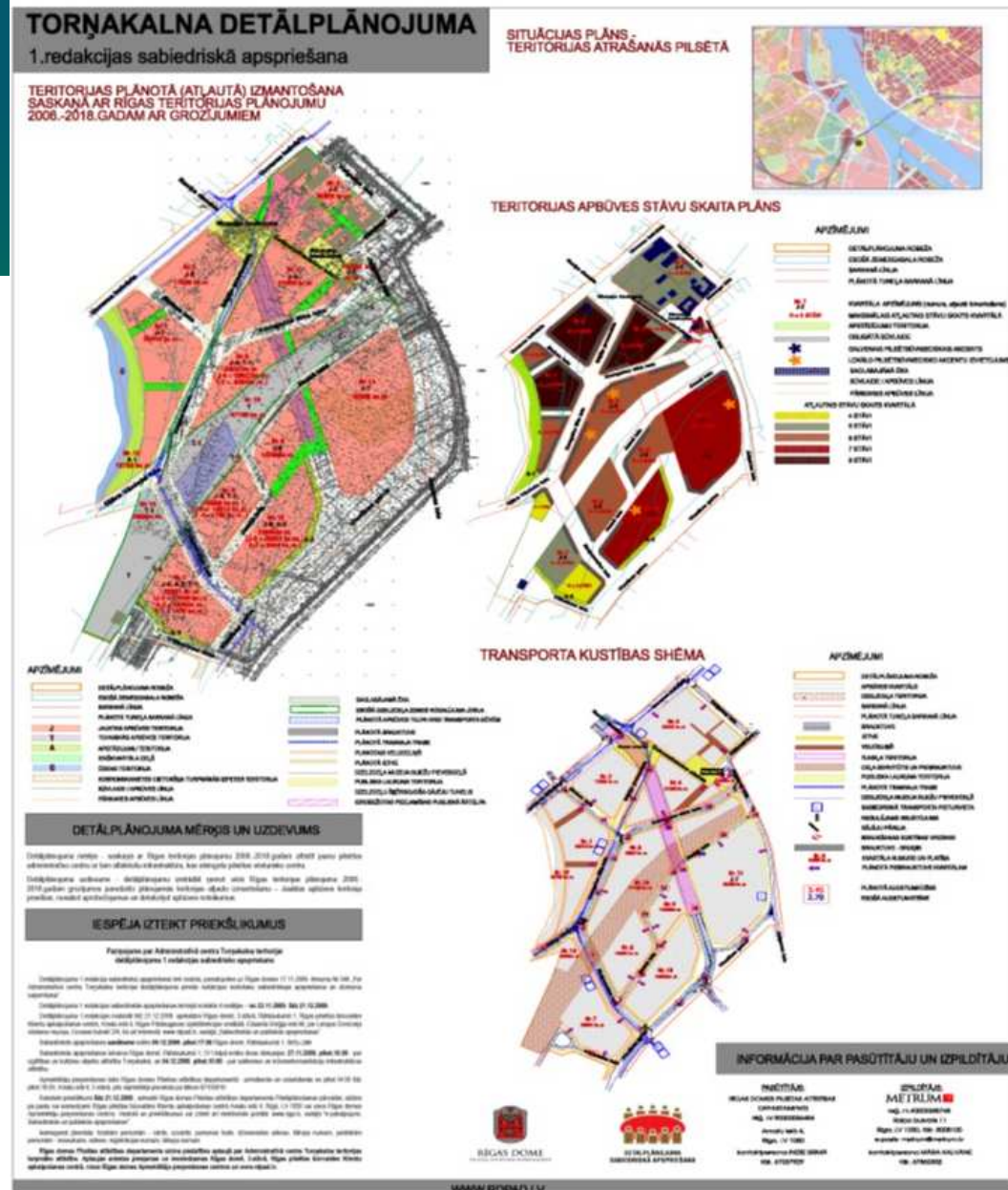
FROM OUTSKIRTS TO PART
OF THE CITY



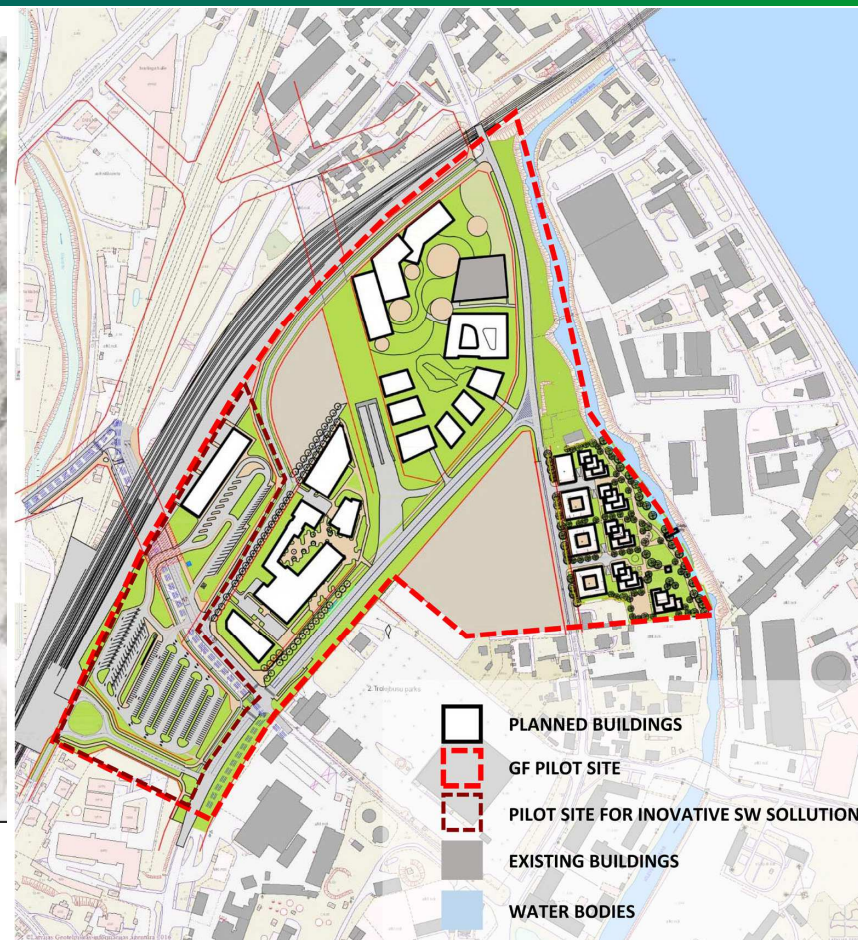
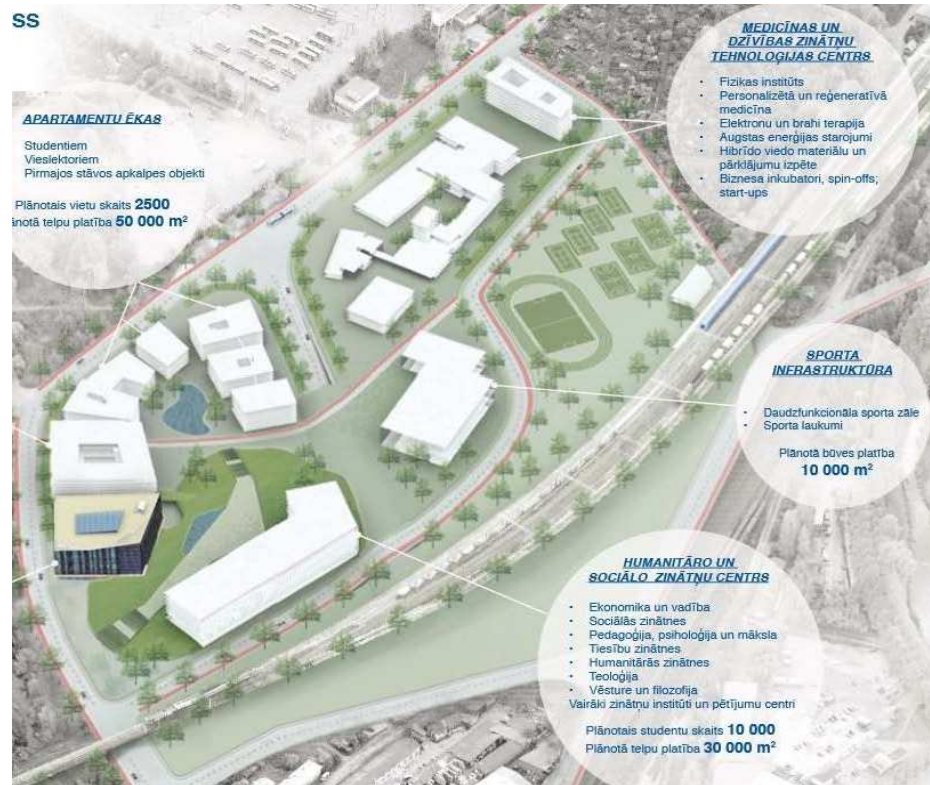


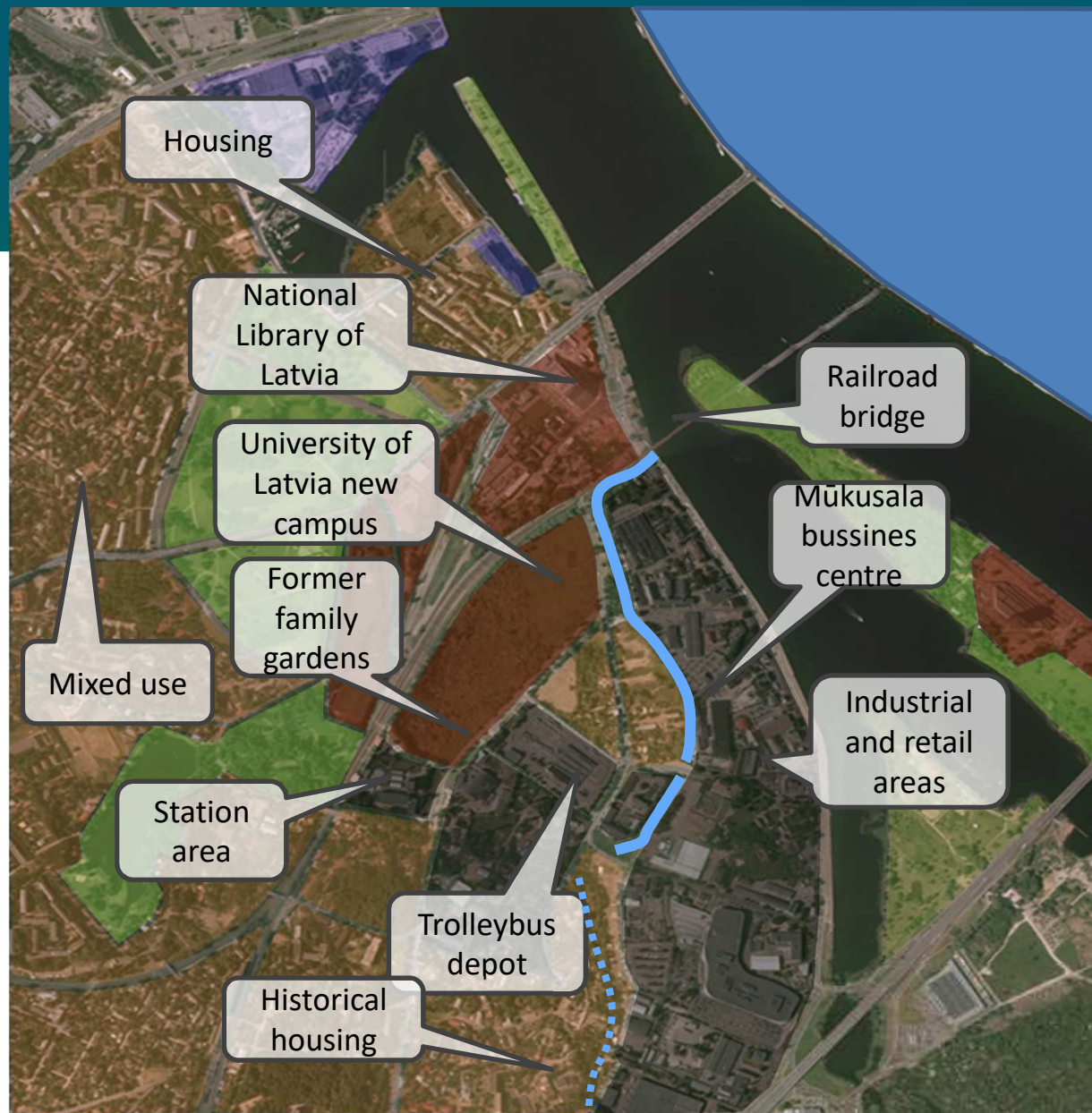
Future history I

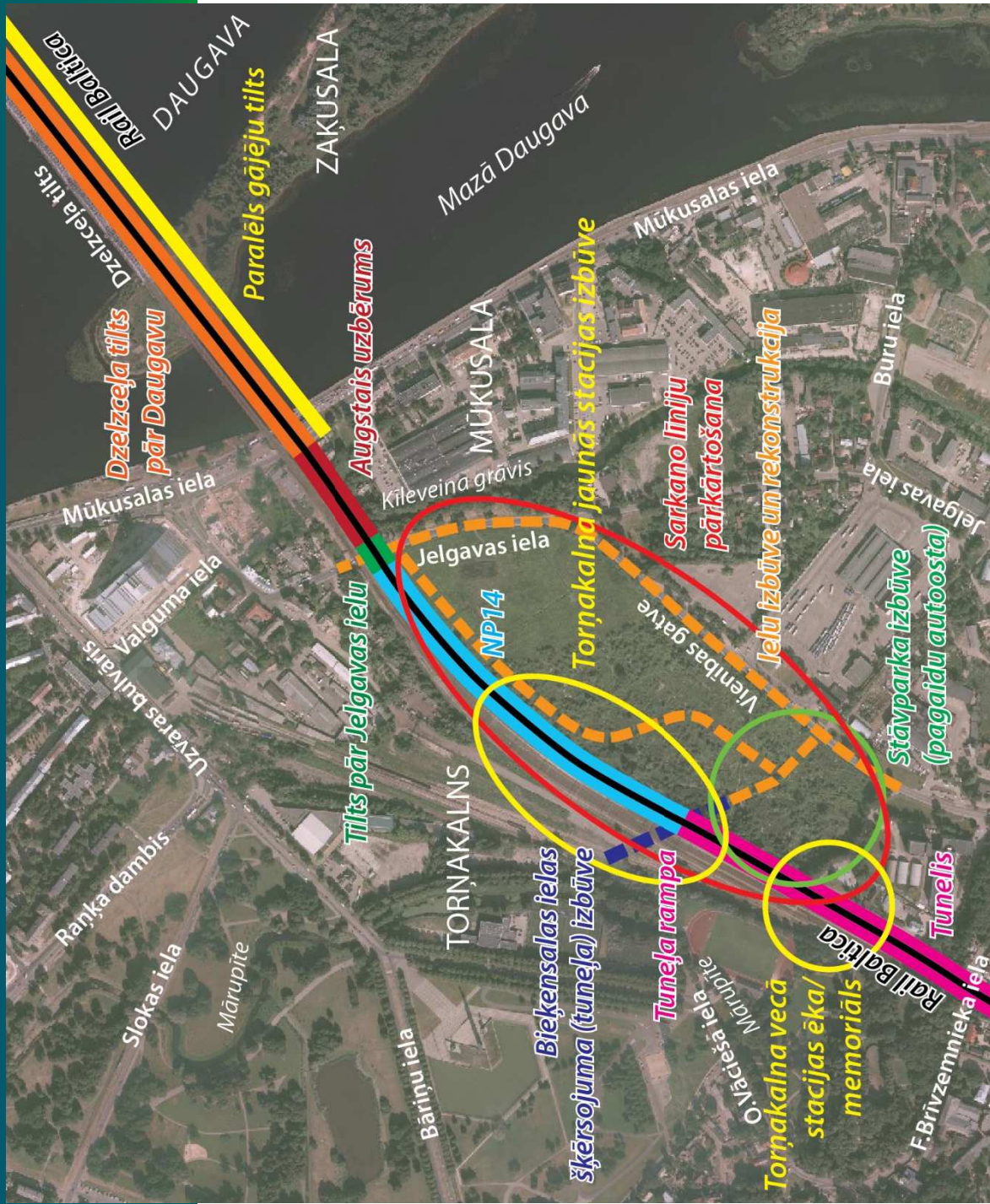




University of Latvia







Interreg
Central Baltic



EUROPEAN UNION
European Regional Development Fund





iWater summerschool



EUROPEAN UNION
European Regional Development Fund





EUROPEAN UNION
European Regional Development Fund



Process...

iWater Summer Schools



EUROPEAN UNION
European Regional Development Fund



Process...

iWater Summer Schools



EUROPEAN UNION
European Regional Development Fund



Process...

Group Riga1



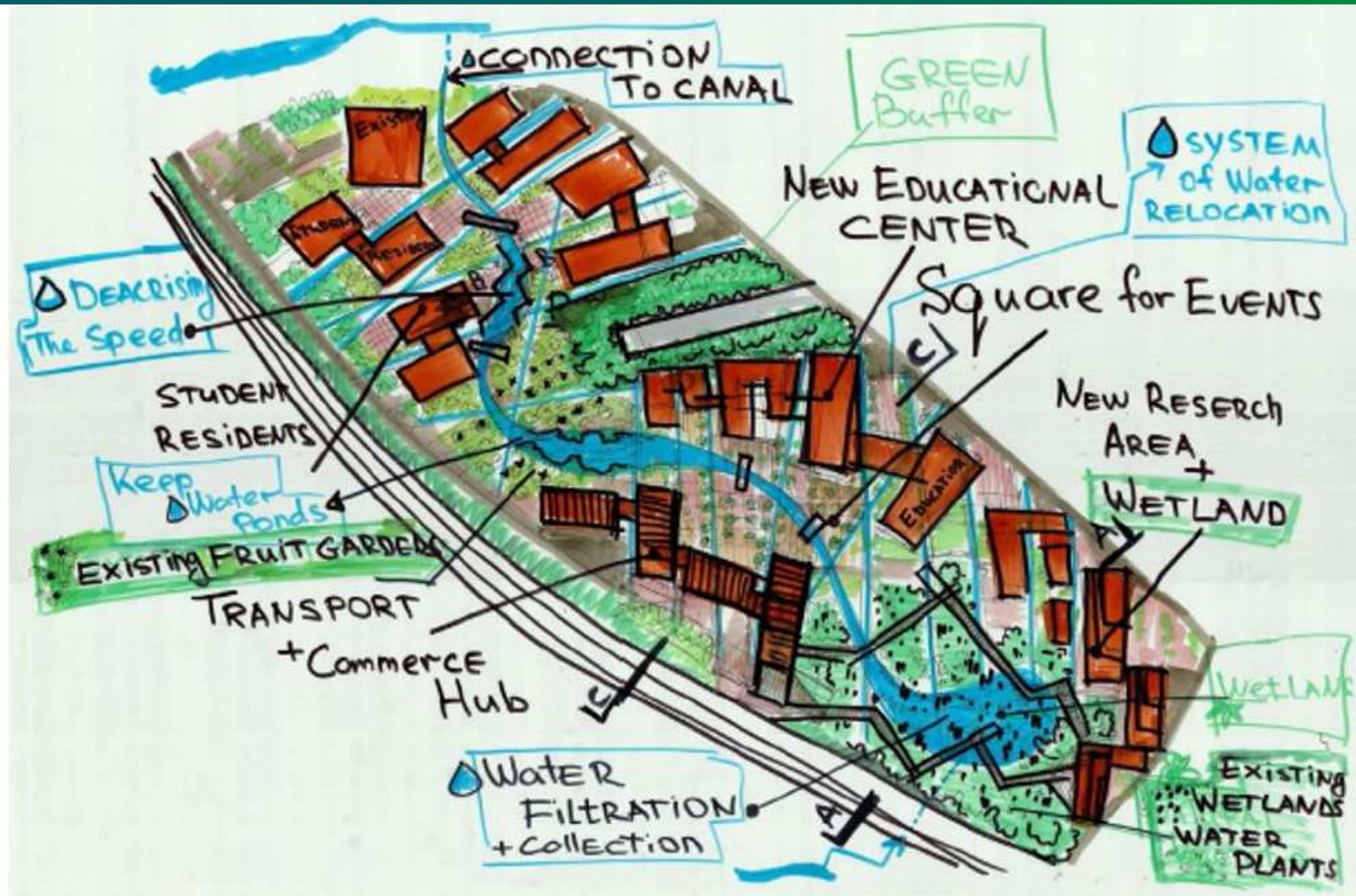
Process...

Group Riga2

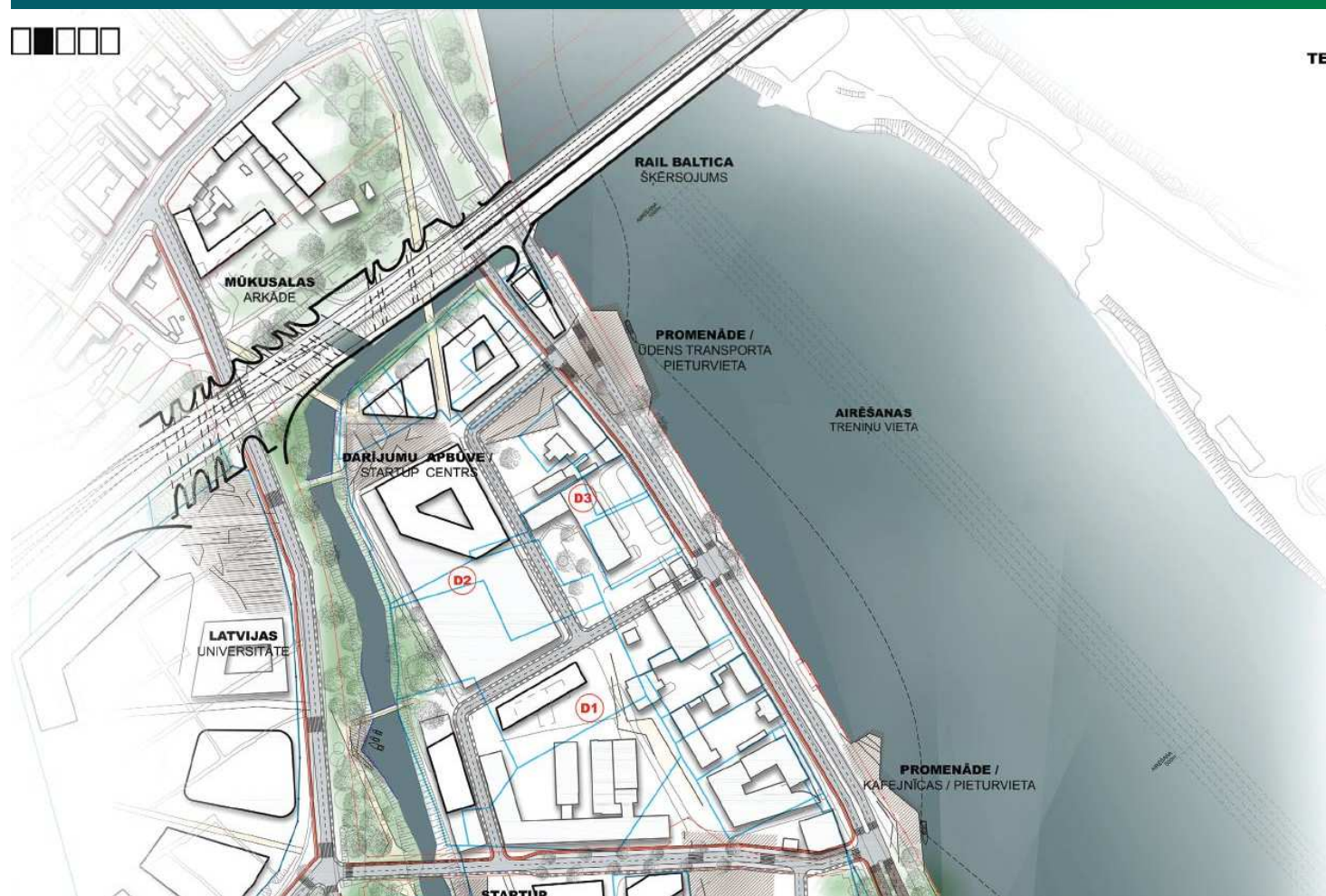


Process...

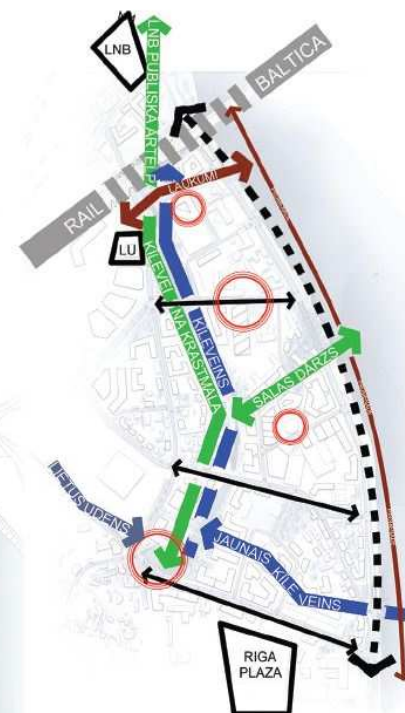
Group Riga3



Baltic Urban Lab



TERITORIJAS TĒLPISKĀS ORGANIZĀCIJAS SCHEMA



PROJEKTĒJAMĀS APBŪVES MORFOLOGIJA



EUROPEAN UNION
European Regional Development Fund



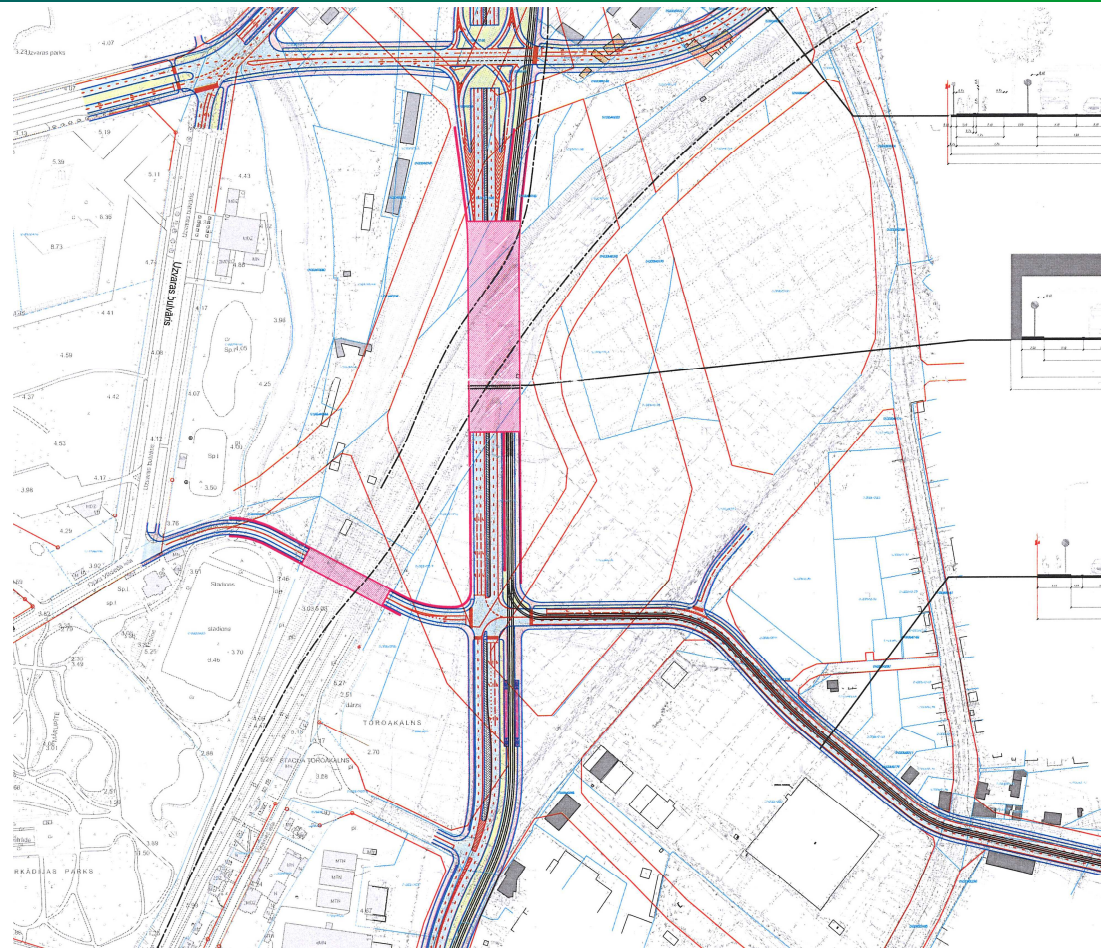
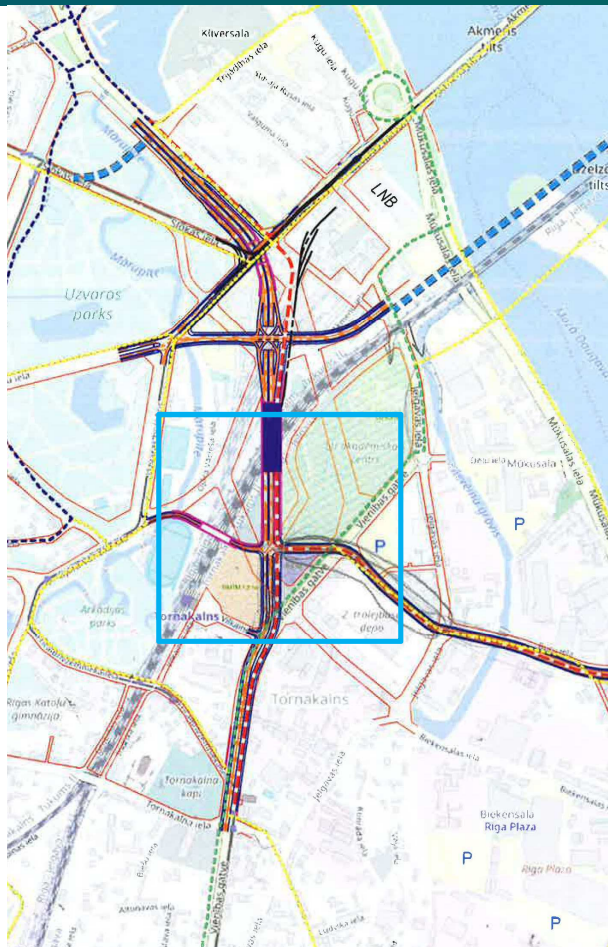
Baltic Urban Lab



Future history II



Infrastructure transformations



EUROPEAN UNION
European Regional Development Fund



Transformations of pilotsite area size





iWater

...our response to
the challenges...



Integrated Storm Water Management
www.integratedstormwater.eu



EUROPEAN UNION
European Regional Development Fund



iWater Pilot Site

New development with existing masterplan

A place of **water, nature** and **hidden human traces** ...

... to remain a green and busy campus?

... or to become a large multi-modal transport hub?

... or a combination of both?









Lessons learned



Lessons in Riga:

- We should strongly encourage Urban planning and management practices – take a stormwater as **solutions** and **added value**.
- Integrated stormwater solutions is powerfull tool to create higher quality and **more resilient urban space**.
- ... and we should be **collaborative and patient**.



EUROPEAN UNION
European Regional Development Fund





Thank you!

Andris Ločmanis

iWater Project Strategic planning expert

E-mail: andris.locmanis@riga.lv

City Development Department of the Riga City Council

www.rdpad.lv

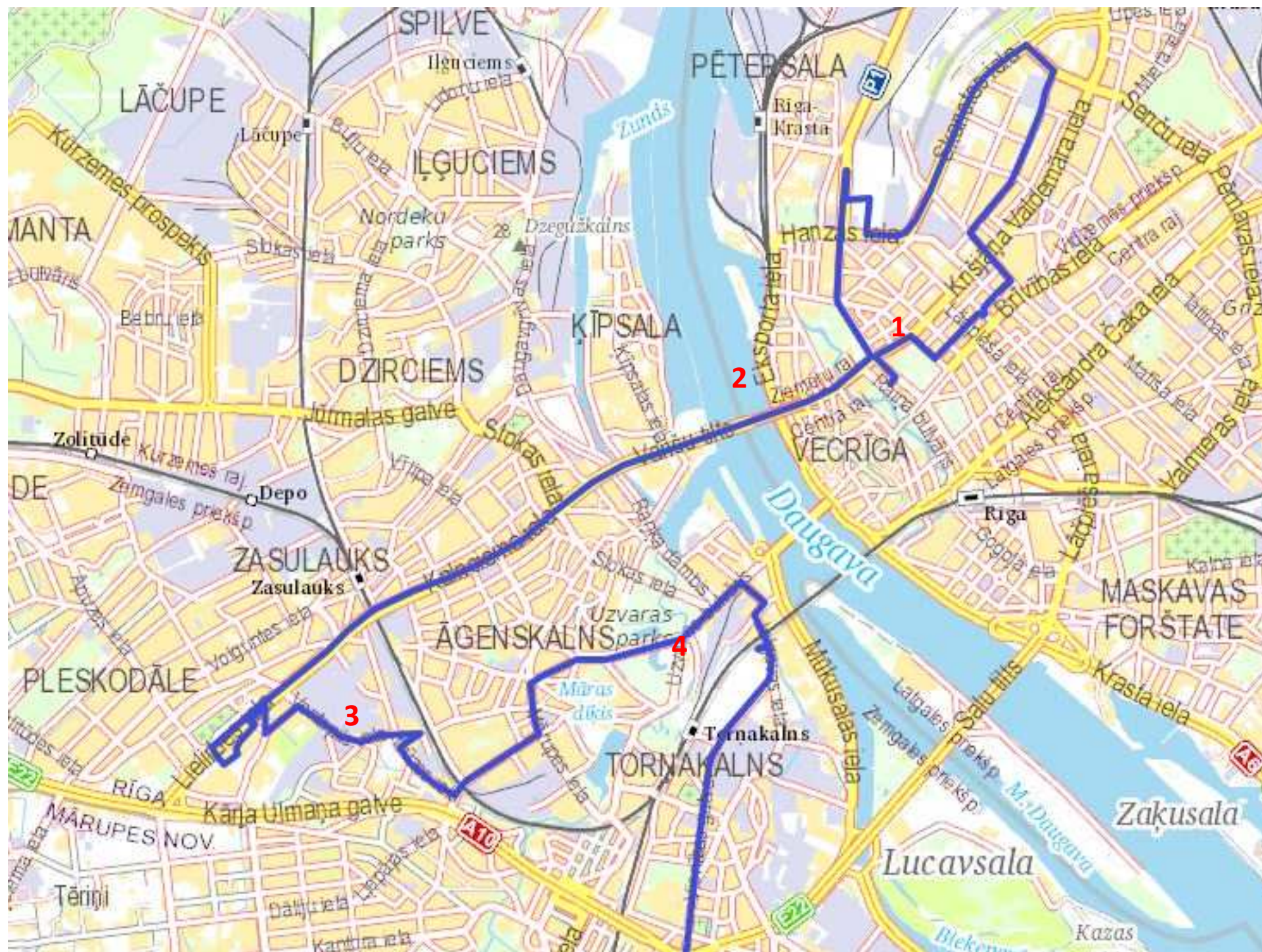


Integrated Storm Water Management
www.integratedstormwater.eu



Study Tour





Places of interest 1

Swales in Skanste neighborhood park



EUROPEAN UNION
European Regional Development Fund



Places of interest 2

Swale + pond + underground structure in Skanste neighborhood park



EUROPEAN UNION
European Regional Development Fund



Places of interest 3

Swale in parking lot of Spice Home retail park



EUROPEAN UNION
European Regional Development Fund



Places of interest 4

View to Riga's iWater project pilotsite



EUROPEAN UNION
European Regional Development Fund

